



Pedestrian Barrier Installation Instructions

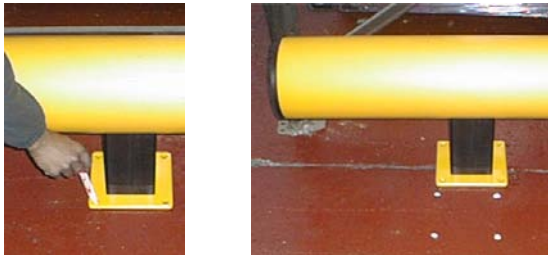
The only aid that may be required for barrier assembly is a rubber mallet. For anchoring the post base plates the following equipment will be required:

- Power Drill
- 12mm masonry/concrete drill bit, minimum length 120mm
- 19mm spanner
- Torque wrench
- Marker pen
- Suitable ear, eye and dust protection equipment.

1. Position the assembled unit. The distance between the rack end and the edges of the barrier base plates should be between 125mm and 150mm.



2. Using the holes for the post fixings as a template, mark the position for drilling the 12mm holes for the fixing bolts using an easily visible marker pen.

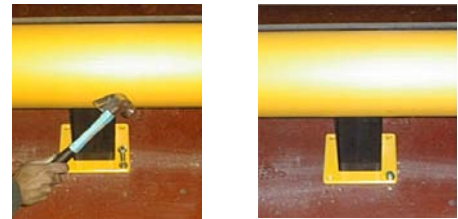


3. With a 12mm masonry/concrete drill bit, using the marked positions drill 8 holes for the post fixing bolts to a minimum depth of 100mm.



When all the holes are drilled clean up the drilling dust/particles and reposition the rack end barrier so that the holes in the base plates coincide with the

4. Place the fixing bolts into the drilled holes through the holes in the base plates. Using a hammer, hammer the fixing bolts into the drilled holes so that a minimum of 15mm of threaded bolt protrudes above the post base plates. To facilitate hammering the bolts, an installation aid tool is optionally available.



5. Using a 19mm spanner, tighten the fixing bolt nuts until they start to nip down on the base plates.



6. Finally, using a torque wrench, tighten the bolt nuts to the recommended torque of 40Nm for uncracked concrete and 35Nm for cracked concrete.

